




busbar box

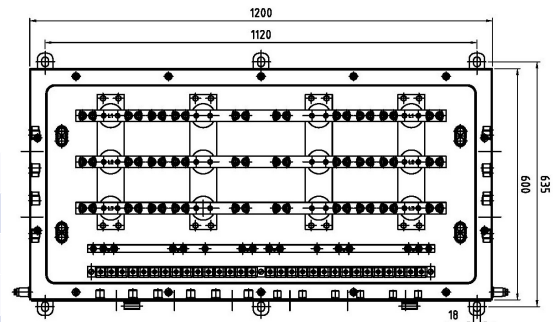
mode of protection  I M2 EEx e I
 II 2G EEx e II T4 bzw. T6
 II 2D IP65 T130°C bzw. T80°C

type 53101-10-...

for use of rated voltage of up to 1000 V with a conductor cross section of up to 185mm² to connect and distribute cables and conductors

EC-Type-Examination-Certificate DMT 02 ATEX E 192

current	AC
mainbox	
max. voltage	up to 1000 V
cross section	25 - 185 mm ²
sidebox	
max. voltage	up to 500 V
cross section	up to 10 mm ²
coat of paint	RAL 1004 (yellow)

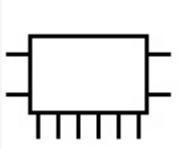


description

casing and cover of steel sheet 3mm

cover with hinges

inside of the box 3 copper bars with terminals for cross section 25 - 185mm², 1 bar for protective earthing conductor, 2, 4 or 6 cable entry holes at one longside, at smallsides each 2 cable entries.

item number		kgs (weight)
53101.110		100 kgs