




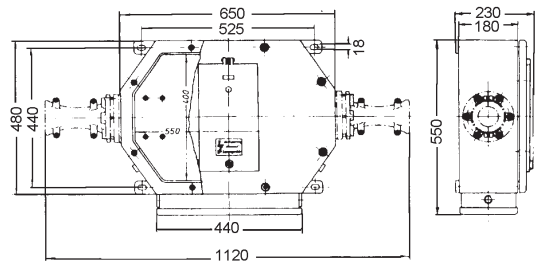
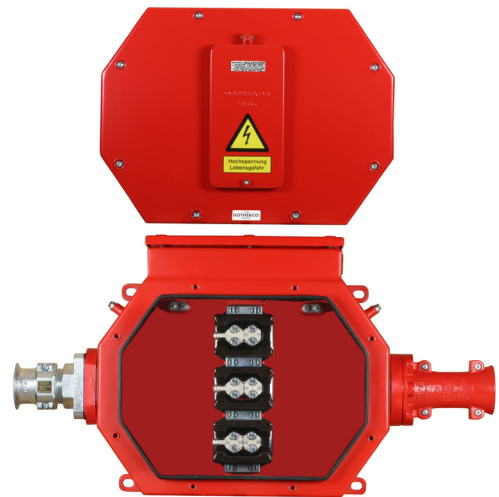
high voltage junction box

mode of protection  I M2 EEx e I
 II 2G EEx e II T6
 II 2D IP65 T80°C

type 53130

for connection of 2 high voltage cables

EC-Type-Examination-Certificate DMT 00 ATEX E 052

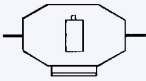


	mainbox	sidebox
current type	3 AC	AC/DC
max. voltage	up to 6 kV	up to 500 V
rated current	330 A (370 A)	up to 10 A
cross section	16 - 150 mm ²	up to 10 mm ²
coat of paint	RAL 3002 (red)	
optional stainless steel		

description

casing and cover of steel sheet 3mm, the casing is provided with 3 ceramic terminal sockets to connect cables and conductors up to 150mm², internal and external earthing, sidebox is provided for connecting supervising and control conductors up to 6mm², option optical fibres

optional
casing waterproof IP 67/68, pressure compensating element to avoid condensation

item number		kgs (weight)
53130.55150		49

suitable cable glands

- ▶ 5410. 92
- ▶ 5410.108
- ▶ 54158...
- ▶ 54345.02...
- ▶ 54345.03...
- ▶ 54200...