

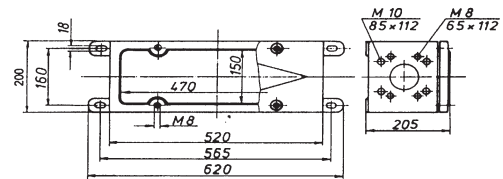
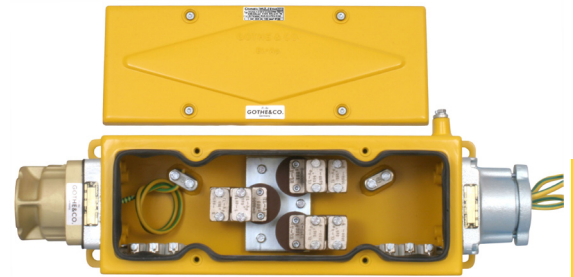
junction box

mode of protection Ex I M2 EEx e I
 Ex II 2G EEx e II T6 resp. T4
 Ex II 2D IP66 T80°C resp. IP65 T80°C

type 53252

for connection of 2 cables

EC-Type-Examination-Certificate BVS 03 ATEX E 192



main terminals	
rated voltage	1 kV AC/DC
cross section	35 - 185 mm ²
temperature class and rated current depending on a used cross section and the ambient temperature	
-20°C up to +40°C	type 53252-.-.-.-. temperature class T6 up to 304 A
	type 53252-.-.-.-. temperature class T4 up to 350 A
side terminals	
rated voltage	500 V AC/DC
rated current	up to 20 A
rated connection cross section	up to 6 mm ²
ingress protection by EN 60529	
type 53252-.-.**-	(* = code number 0, without sidebox) IP66
type 53252-.-.-.**-	(* = code number 1-7, with sidebox) IP65
coat of paint	RAL 1004 (yellow)
optional stainless steel	

description

casing and cover of steel sheet 3mm, connection measures for flange cable glands 65x112 and 85x112, base plate with 3-pole connection terminal, up to 4x3 connecting bow terminals provided as side terminals for being able to connect through the integrated conductors for supervising and controlling, purpose internal and external earthings.

fastening: 4 mounting plates with elongated hole for attachment screws.

item number		kgs (weight)
53252.102		20 kgs

suitable flange cable glands

- ▶ 54345.02...
- ▶ 54345.03...