

### High voltage cable coupler 8 kV

Manufacturer: Patton and Cooke, Canada  
Series C 80  
Contact Structure: 3 Power - 2 Ground - 1 Pilot

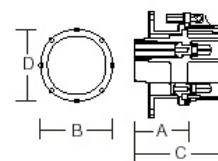
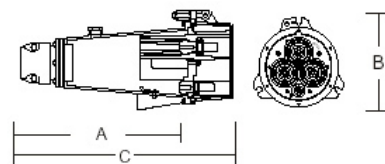
The cable couplers are for quick and easy junction of high voltage cables.

Rated Voltage (3AC)	8 kV~
Rated Current	400 A
Frequency	50 - 60 Hz

The high voltage cable couplers are available for in cable and equipment mounted versions. The standard terminations for phase, pilot and ground conductors are designed for solderless termination (Allen head screws).

#### Cable coupler options:

- up to 3 additional Pilots and 2 additional Ground contacts
- leg mounting options
- live end covers
- epoxy coating
- all stainless steel hardware
- potting compound
- closing tool



item number	execution	dimension				kg
		A	B	C	D	
C80D1013 <u>x</u> C80D1014 <u>x</u> C80D1015 <u>x</u> C80D1016 <u>x</u>	cable mounted male	508 mm	241 mm	584 mm		14.5
C80D1017 <u>x</u>	equipment mounted male	191 mm	267 mm	533 mm	235 mm	11.5
C80D2014 <u>x</u> C80D2015 <u>x</u> C80D2016 <u>x</u> C80D2017 <u>x</u>	cable mounted female	508 mm	241 mm	584 mm		15.3
C80D2018 <u>x</u>	equipment mounted female	272 mm	267 mm	343 mm	235 mm	12.3

#### 400 AMP coupler catalog number suffixes -x

max. cable size x (mm <sup>2</sup> )	x- item number suffix	max. cable size x (mm <sup>2</sup> )	x- item number suffix
34	F	127	M
42	G	152	N
54	H	178	O
67	J	203	P
85	K	228	Q
107	L	254	R

#### coupler entrance fitting gasket kits (for cablemount couplers)

outside cable diameter (mm)	(in)	item number	outside cable diameter (mm)	(in)	item number
20.8-22.1	0.82-0.87	C150F3004	51.1-53.8	2.01-2.12	C150F3016
22.4-23.9	0.88-0.94	C150F3005	54.1-57.2	2.13-2.25	C150F3017
24.1-25.7	0.95-1.01	C150F3006	57.4-60.2	2.26-2.37	C150F3018
25.9-26.9	1.02-1.06	C150F3007	60.5-63.5	2.38-2.50	C150F3019
27.2-28.4	1.07-1.12	C150F3008	63.8-66.5	2.51-2.62	C150F3020
28.7-31.8	1.13-1.25	C150F3009	66.8-69.9	2.63-2.75	C150F3021
32.0-34.8	1.26-1.37	C150F3010	70.1-72.9	2.76-2.87	C150F3022
35.0-38.1	1.38-1.50	C150F3011	73.2-76.2	2.88-3.00	C150F3023
38.4-41.1	1.51-1.62	C150F3012	76.5-79.2	3.01-3.12	C150F3024
41.4-44.5	1.63-1.75	C150F3013	79.5-82.6	3.13-3.25	C150F3025
44.7-47.5	1.76-1.87	C150F3014	82.8-85.6	3.26-3.37	C150F3026
47.8-50.8	1.88-2.00	C150F3015	85.9-88.9	3.38-3.50	C150F3027